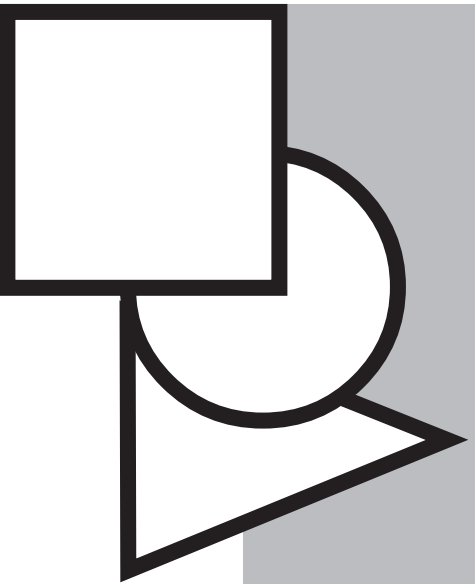


# Auxiliary Cup Slide

# 130/90/60

as of 2014

# Operator's Manual & Parts List



Integrated with an  
Orion 130

Standard # 9070-13-000

***ITW Trans Tech: Complete Pad Printing Solutions***

130/90/60 Cupslide

**INDEX**

- I. MACHINE SPECIFICATIONS
- II. OPERATING INSTRUCTIONS
- III. MECHANICAL  
ASSEMBLY DRAWINGS  
BILL OF MATERIAL
- IV. ELECTRICAL  
ELECTRICAL SCHEMATICS  
BILL OF MATERIAL
- V. PNEUMATIC DIAGRAM

130/90/60 Cupslide

I. Machine Specifications

Auxiliary Cup Slide  
130/90/60  
Standard #9070-09

Electrical Requirements

Voltage 24VDC

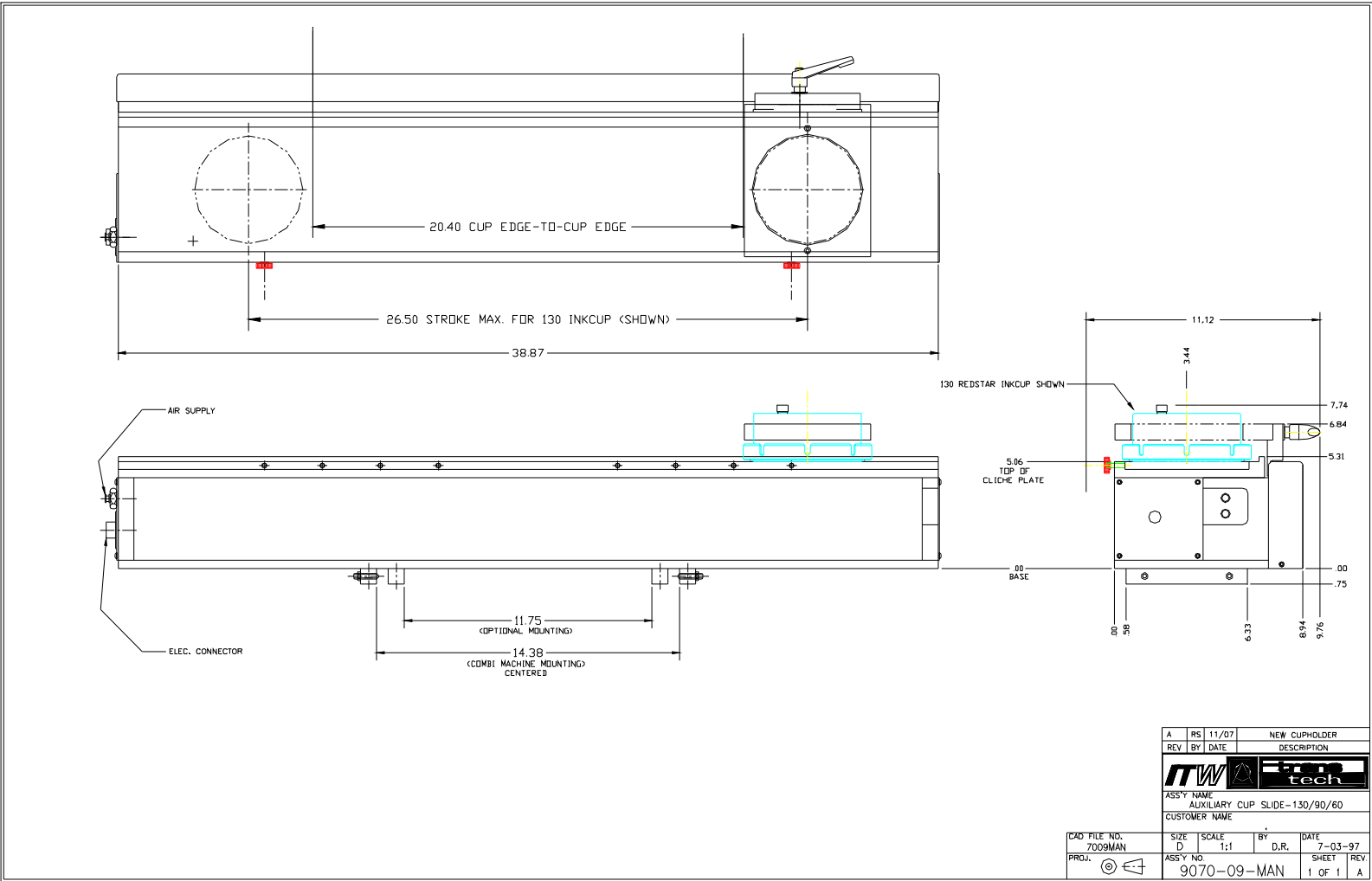
Amperage 0.5AMP


Pneumatic Requirements

PSI 70

SCFM 2

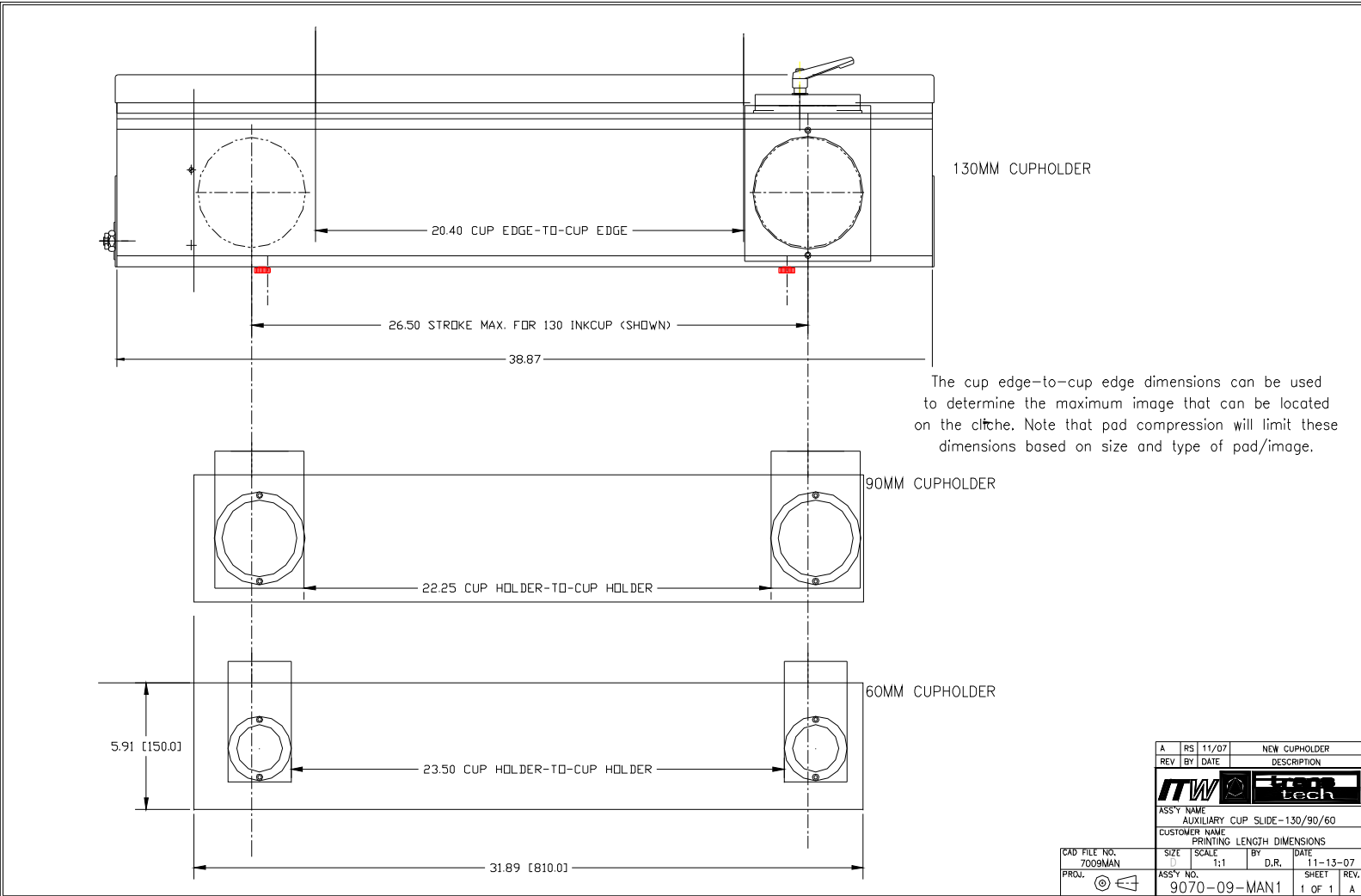
130/90/60 Cupslide  
 I. MACHINE SPECIFICATIONS CONT




A	RS	11/07	NEW CUPHOLDER
REV	BY	DATE	DESCRIPTION
			
ASSY NAME: AUXILIARY CUP SLIDE-130/90/60			
CUSTOMER NAME:			
CAD FILE NO.	SIZE	SCALE	DATE
7009MAN	D	1:1	7-03-97
PROJ.	ASSY NO.	BY	D.R.
⑩	9070-09-MAN		
			DATE
			7-03-97
			SHEET
			1 OF 1
			REV
			A

# I. MACHINE SPECIFICATIONS, CON'T

130/90/60 Cupslide



A	RS	11/07	NEW CUPHOLDER	
REV	BY	DATE	DESCRIPTION	
				
ASSY NAME AUXILIARY CUP SLIDE-130/90/60				
CUSTOMER NAME PRINTING LENGTH DIMENSIONS				
CAD FILE NO. 7009MAN	SIZE D	SCALE 1:1	BY D.R.	DATE 11-13-07
PROJ. ©	ASSY NO. 9070-09-MAN1	SHEET 1 OF 1	REV. A	

130/90/60 Cupslide

## II. OPERATING INSTRUCTIONS

Once properly installed and connected, the operator should enable the slide by pushing the DOCTOR button on the Orion main screen.

The cup holder will move from right to left continuously while the printer is in the front up position. The cup stop delay is adjustable via the SIDE DWELL located on the cupslide installation screen. The cup speed is adjustable via the flow control located on the right end of the slide. This doctoring motion will continue as long as the printer remains in the front up position.

The cup slide will inhibit the printer back motion while moving and enable the printer while stopped at either end of its travel. A blocking valve has been added to the Orion to prevent the printer from moving backwards when the cup slide is not as either side. This valve blocks the air from leaving the cylinder. There is a fixed delay of at least .05 seconds prior to the cup motion to prevent the printer from moving just prior to the slide motion.

### Faults and Recovery

Cup slide does not move:

- Check power and air supply connections. Printer must be powered up with guards closed.
- Check that Cup slide has been selected as WITH and ON in the Cup slide accessory screen.
- Check that the DOCTOR button is highlighted on the main screen.
- Push the STOP button. This may allow the cupslide to move to one side.
- Check that the proximity switch is working for the corresponding side the cupslide is at.
- Push EMERGENCY STOP button. Push and hold START and STOP buttons in for 10 seconds until screen changes. Pull out EMERGENCY STOP and push START button. Go to Cupslide accessory screen and select WITH and ON. Select DOCTOR on main screen. Cycle the main power and power-up as normal. Push the STOP button if cupslide is not at a side.

Cup slide stopped in mid-stroke:

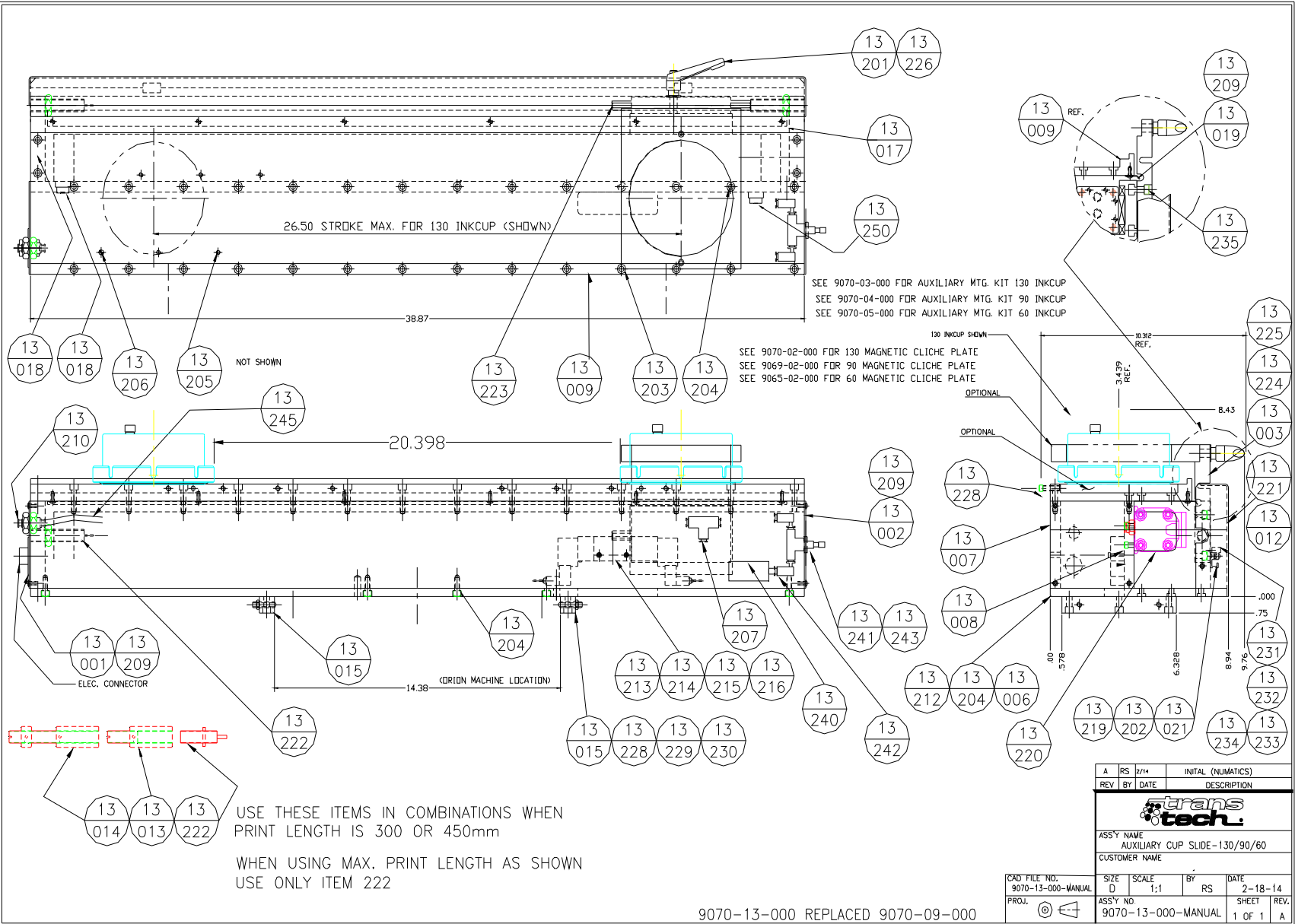
- Check power and air supply. Check valve. Do above step.

Poor print image:

- Check delay adjustment. Check ink viscosity. Check the plate for wear.

### III. MECHANICAL

130/90/60 Cupside



A	RS	9/14	INITIAL (NUMATICS)
REV	BY	DATE	DESCRIPTION
ASSY NAME AUXILIARY CUP SLIDE-130/90/60			
CUSTOMER NAME			
CAD FILE NO. 9070-13-000-MANUAL	SIZE D	SCALE 1:1	BY RS
PROJ. ©	ASSY NO. 9070-13-000-MANUAL	DATE 2-18-14	DATE 2-18-14
		SHEET 1 OF 1	REV. A

9070-13-000 REPLACED 9070-09-000

<b><u>ITEM</u></b>	<b><u>PART NUMBER</u></b>	<b><u>QTY</u></b>	<b><u>DESCRIPTION</u></b>
	9070-83-000	1	Electrical Aux Cupslide
13-001	9070-09-001	1	Left Cover
13-002	9070-09-002	1	Right Cover
13-003	9070-09-003	1	Holder Bracket
13-006	9070-09-006	1	Bottom Plate
13-007	9070-09-007	1	Front Side Plate
13-008	9070-09-008	1	Back Side Plate
13-009	9070-09-009	1	Cliche Holder
13-012	9070-09-012	1	Guard
13-013	9070-09-013	2	Stop - 18"
13-014	9070-09-014	2	Stop - 12"
13-015	9070-09-015	2	Lock Block
13-017	9070-09-017	1	End Plate - Left
13-018	9070-09-018	1	End Plate - Right
13-019	9070-09-019	1	Bottom Lid
13-021	9070-09-021	1	Extrusion (Modified Switch Rail)
13-201	601-00-003	1	Handle, Stud Type Adjustable(48162)
13-202	501-00-004	2	Socket Head Cap Screw M3 X 10
13-203	501-00-043	14	Socket Head Cap Screw M6 X 25
13-204	501-01-258	34	Socket Low Head Cap Screw M6 X 20
13-205	501-05-002	1	Shoulder Screw M5 X 6 X 16
13-206	501-20-064	1	Dowel Pin, M6 X 12mm Oversized
13-207	204-04-290	1	Tee, Union, 1/4" Tubing
13-209	501-04-484	14	Socket Button Head Cap M4 X 8
13-210	204-04-358	1	Union, Bulkhead, 1/4" Tubing
13-212	501-20-029	2	Dowel Pin M8 X 20
13-213	202-00-250	1	Valve, Solenoid 3 Pos
13-214	501-00-008	2	Socket Head Cap Screw M3 X 25
13-215	204-04-051	6	Elbow, Male, 1/4" Tubing, 1/8Th
13-216	204-04-021	1	Connector, Male, 1/4" Tubing, 1/8" Thrd
13-219	332-08-014	2	Switch, Auto, Proximity, Rail Mounted, 4.5-28Vdc, 3m lead
13-220	204-06-051	1	Rodless Air Cylinder; 32mm Bore, 26-5/8" stroke

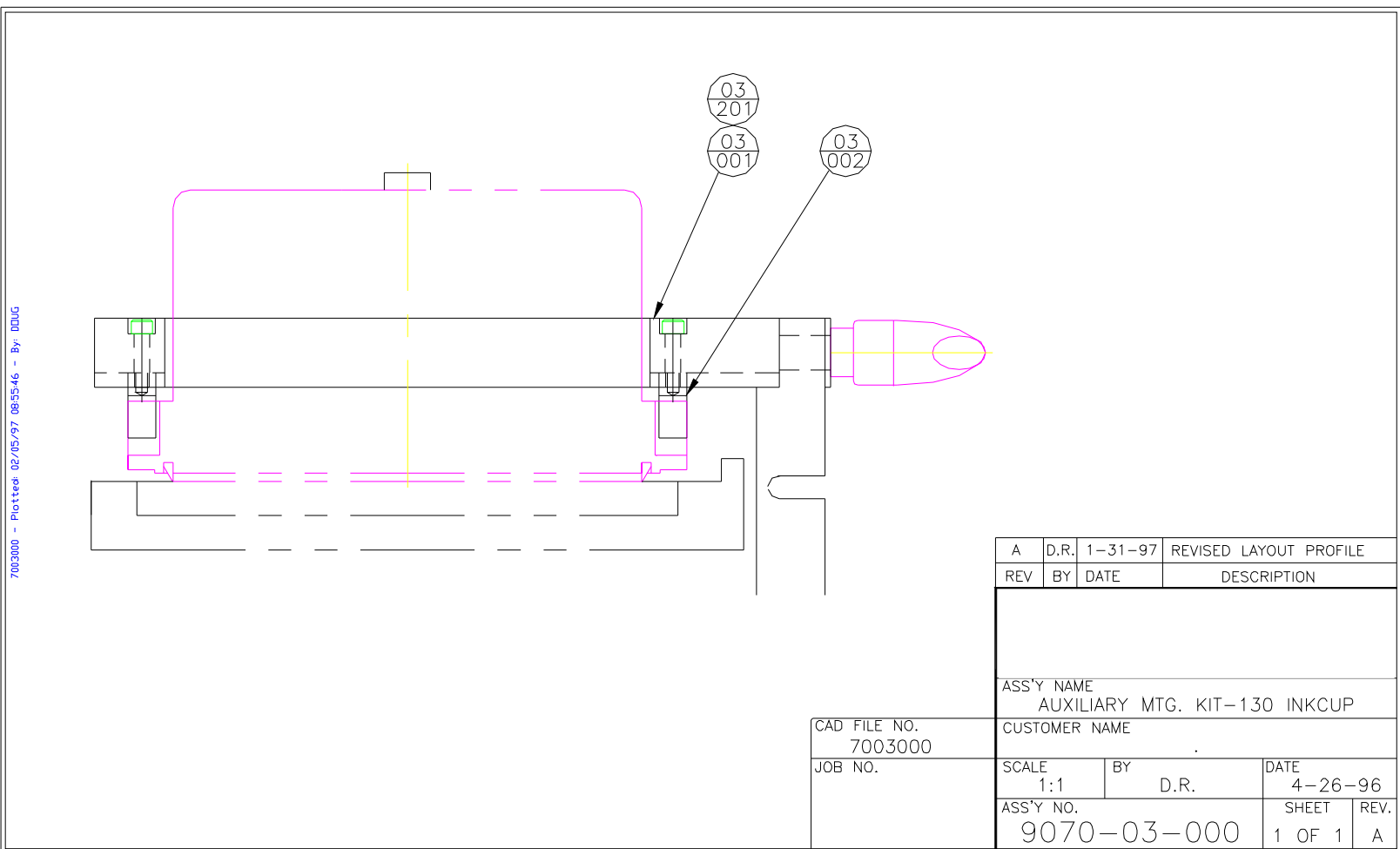
130/90/60 Cupslide



<b><u>ITEM</u></b>	<b><u>PART NUMBER</u></b>	<b><u>QTY</u></b>	<b><u>DESCRIPTION</u></b>
13-221	501-04-495	7	Socket Button Head Cap M5 X 10
13-222	230-01-007	2	Shock Absorber (Nrb056-045)
13-223	103-06-033	2	Rest Button,Scrw,M6 Thrdx25mm Hd Ht
13-224	105-00-002	1	Magnet,Plug Type .250 Od X .250 Thk
13-225	501-03-604	1	Hexagon Socket Set Screw M8 X 10
13-226	532-03-054	1	Washer (Flat), Hardened Thick 3/8"
13-227	501-00-026	12	Socket Head Cap Screw M5 X 12
13-228	501-00-042	8	Socket Head Cap Screw M6 X 20
13-229	501-06-022	4	Cone Point Set Screw,Sckt M6 X 40mm
13-230	521-00-003	4	Nut, Hex, M6 X 1
13-231	501-00-003	2	Socket Head Cap Screw M3 X 8
13-232	531-01-002	2	Lock Washer, M3
13-233	531-00-002	2	Washer, M3 Din125
13-234	521-00-001	2	Nut, Hex, M3, Din934
13-235	501-00-028	8	Socket Head Cap Screw M5 X 20
13-237	522-30-052	4	Nut, Hex, 9/16-18
13-240	204-04-007	1	EGSP - Silencer, General Purpose, 30db Noise Reduction, M10 Plug In
13-241	204-04-549	1	Speed Control (Flow), 1/4" Body, Panel Mount, Plastic
13-242	204-04-238	1	Elbow, Plug-In, 1/4" Tubing
13-243	532-10-310	1	Washer, Flat .860 Odx.634 Idx.03Thk
13-244	202-00-206	1	Valve, Sngl Solenoid 2 Pos (Sy5140)
13-245	205-03-040	7	Tubing, Single, 1/4 X .160(Tr.Blue) x 100 Feet
13-246	207-00-257	1	Connector, 2-Pin Plug Assembly With Lead Wire, DC Coils
13-247	204-02-017	2	Plug, Countersunk Hex-Head 1/4"
13-248	204-04-708	1	Elbow, Male 10/32 To 1/4 Tube
13-249	204-04-003	1	Silencer (Muffler), 1/4 Npt (Nan)
13-250	204-04-022	1	Connector, Male, 1/4" Tubing, 1/4Th
13-251	204-04-052	1	Elbow, Male, 1/4" Tubing, 1/4Th

**III. MECHNAICAL - 130MM CUP PACKAGE**
**130MM CUP PACKAGE**

<u>ITEM</u>	<u>PART NUMBER</u>	<u>DESCRIPTION</u>	<u>QTY</u>
03-001	9070-03-001	INKCUP HOLDER, 130MM	1
03-002	9065-01-010	FINGER	2
03-201	501-00-014	SOCKET HEAD CAP SCREW M4 X12	2

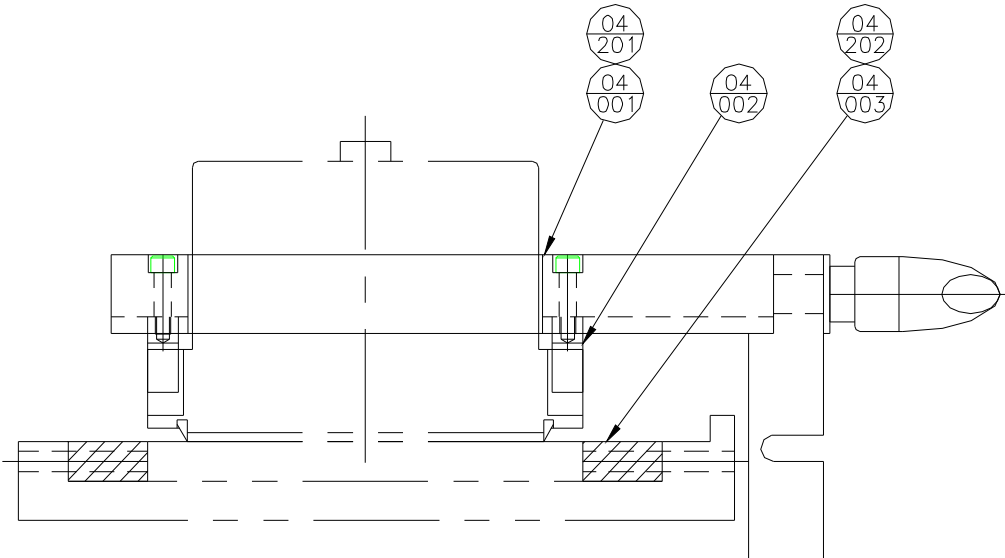


### III. MECHNAICAL - 90MM CUP PACKAGE

130190160 C:\inslide

## 90MM CUP PACKAGE

<u>ITEM</u>	<u>PART NUMBER</u>	<u>DESCRIPTION</u>	<u>QTY</u>
04-001	9070-04-001	INKCUP HOLDER, 90MM	1
04-002	9065-01-010	FINGER	2
04-003	9070-04-003	SPACER, 90	2
04-201	501-00-014	SOCKET HEAD CAP SCREW M4 X12	2
04-202	501-20-014	DOWEL PIN M5X20	4



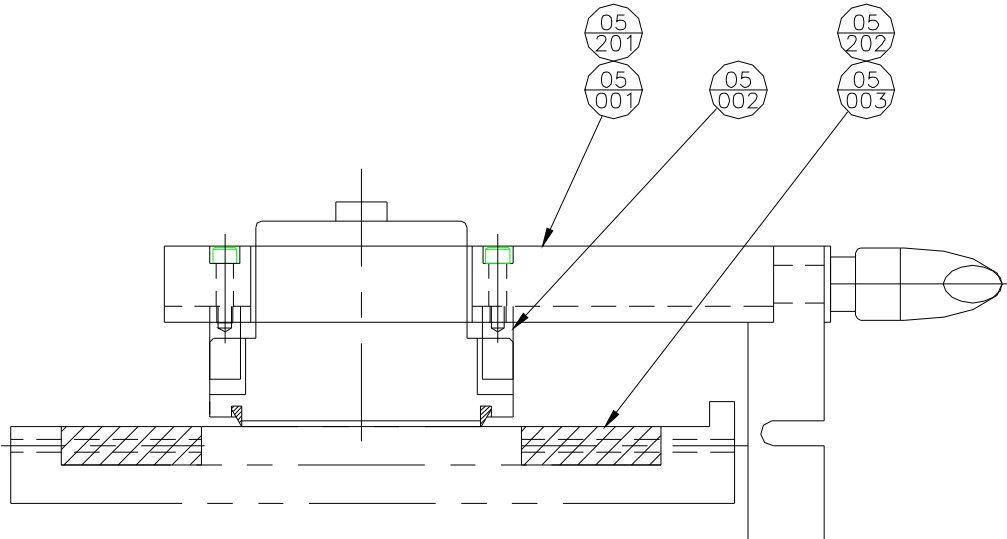
REV	BY	DATE	DESCRIPTION
A	D.R.	1-31-97	REVISED LAYOUT PROFILE

ASS'Y NAME AUXILIARY MTG. KIT-90 INKCUP			
CAD FILE NO. 7004000		CUSTOMER NAME	
JOB NO.	SCALE 1:1	BY D.R.	DATE 4-26-96
ASS'Y NO. 9070-04-000		SHEET 1 OF 1	REV. A

7004000 - Plotted 02/05/97 08:58:34 - By: DDUG

## 60MM CUP PACKAGE

<u>ITEM</u>	<u>PART NUMBER</u>	<u>DESCRIPTION</u>	<u>QTY</u>
05-001	9070-05-001	INKCUP HOLDER, 60MM	1
05-002	9065-01-010	FINGER	2
05-003	9070-05-003	SPACER, 60	2
05-201	501-00-014	SOCKET HEAD CAP SCREW M4 X12	2
05-202	501-20-014	DOWEL PIN M5X20	4



REV	BY	DATE	DESCRIPTION
A	D.R.	1-31-97	REVISED LAYOUT PROFILE

CAD FILE NO. 7005000		ASS'Y NAME AUXILIARY MTG. KIT-60 INKCUP	
JOB NO.		CUSTOMER NAME	
SCALE 1:1	BY D.R.	DATE 4-26-96	
ASS'Y NO. 9070-05-000		SHEET 1 OF 1	REV. A

7005000 - Plotter: 02/05/97, 05:02:51 - By: DDUG

# IV. ELECTRICAL

130/90/60 Cupslide



**CONFIDENTIAL**  
 NOT FOR PUBLICATION. THIS DRAWING IS PROPERTY OF TRANSTECH. ITS USE IS CONDITIONED UPON THE USER'S SIGNATURE AND DATE. TRANSTECH ASSUMES NO LIABILITY FOR MATERIAL DESCRIBED THEREIN OR ANY OTHER PURPOSE WITHOUT WRITTEN PERMISSION FROM TRANSTECH.

REV	DATE	BY	CHK	DESCRIPTION
1	1/14/15	RS		Initial Release
2		A		

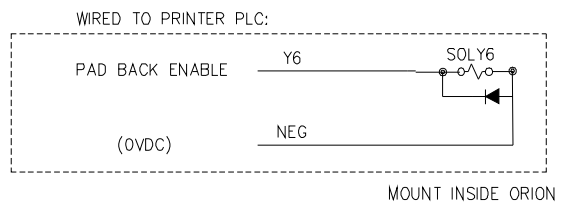
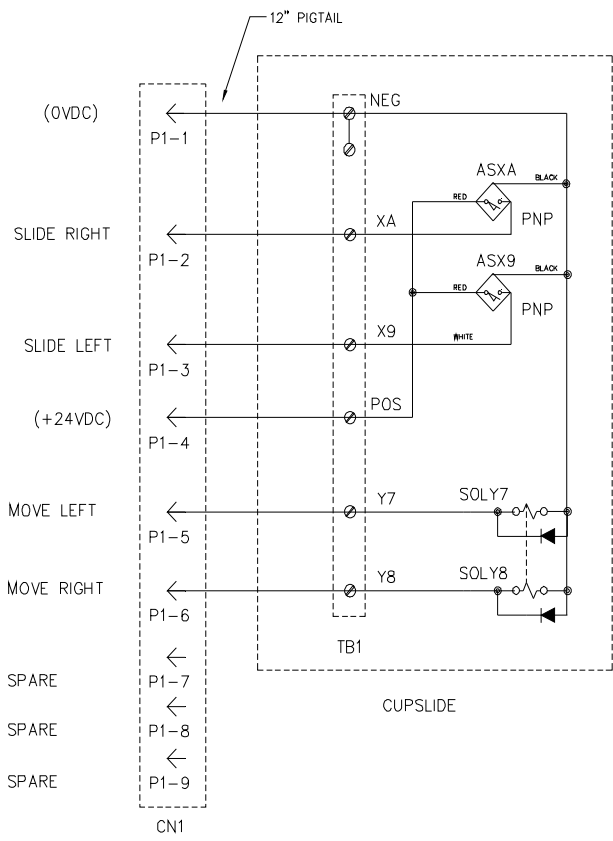
DRAWING TITLE	
Electrical Schematic ORION 130 CUPSLIDE INTERFACE	
ENGINEER Rich Schultz	
RELEASE DATE 1/14/15	
CUSTOMER NAME STANDARD	
JOB NUMBER 9070-83-000	
SHEET NUMBER 01 OF 01	SCALE 1:1
DRAWING NUMBER 9070-83-000-B	

CONNECT WIRES TO POINTS ON ORION  
 WITH THE CORRESPONDING WIRE LABELS  
 WHEN INTERFACING

## CABLE CONNECTIONS

SLIDE CONNECTOR CN1

WIRE #	CONNECTOR 1 (PIN #)
NEG	1
XA	2
X9	3
POS	4
Y7	5
Y8	6
SPARE	7
SPARE	8
SPARE	9



101  
102  
103  
104  
105  
106  
107  
108  
109  
110  
111  
112  
113  
114  
115  
116  
117  
118  
119

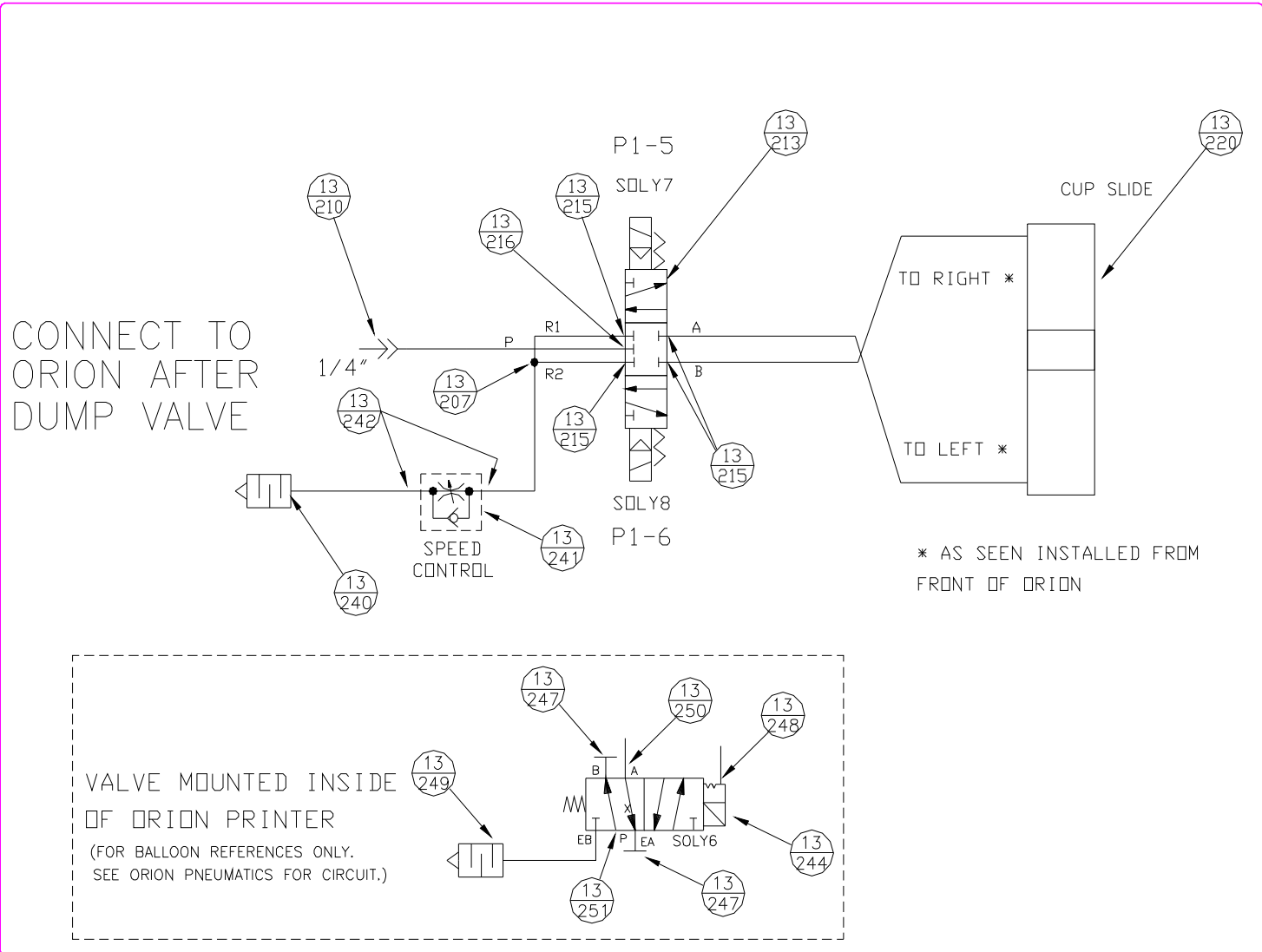
**9070-83-000 BILL OF MATERIAL**

<b><u>ITEM</u></b>	<b><u>PART NUMBER</u></b>	<b><u>QTY</u></b>	<b><u>DESCRIPTION</u></b>
80-213	322-05-007	1.0 EA	RECEPTACLE, CONNECTOR (9 CONTACT)
80-215	322-05-010	1.0 EA	PLUG, CONNECTOR (9 CONTACT)
80-216	322-05-039	9.0 EA	CONTACT, MULTIMATE SOCKET,24-20(WR)
80-217	322-05-047	6.0 EA	CONTACT, MULTIMATE PIN 18-14 AWG
80-218	391-60-021	5.0 FT	CABLE 18AWG/2 (#190)
80-220	391-60-005	10.0 FT	CABLE 20AWG/7 (#190)
80-221	322-05-044	1.0 EA	CLAMP, CABLE(CBL SHELL.453"OD,#13)
80-225	393-03-004	1.0 EA	CORD CONN,PG-13,.341-.354 DIA RANGE
80-226	303-09-002	1.0 EA	TERMINAL BLOCK,3 9/32LG,7TERM(670A)

130/90/60 Cupslide

# V. PNEUMATIC DIAGRAM

130/90/60 Cupslide



130/90/60 CUPSLIDE  
 CAROL STREAM, IL 60118  
 PH 630.752-4000  
 FAX 630.752-4001  
 WWW.LITTECH.COM

**TRANS TECH**  
 CONFIDENTIAL  
 NOT FOR PUBLICATION. THIS DRAWING IS PROPERTY OF LITTECH. ITS USE IS CONDITIONED UPON USER'S AGREEMENT TO NOT TO COPY OR REPRODUCE THE DRAWING IN WHOLE OR PART TO USE IN MATERIAL DISSEMBLED THEREOF OR ANY OTHER MANNER WITHOUT WRITTEN PERMISSION FROM LITTECH.

REV	DESCRIPTION	ENG	DATE
D	Updated Balloons	RS	2/14/15
C	Initial Release	RS	1/14/15

DRAWING TITLE  
 Pneumatic Diagram  
 AUX. CUPSLIDE  
 & ORION INTERFACE  
 INTERFACE

ENGINEER  
 Rich Schulz

RELEASE DATE  
 1/14/15

CUSTOMER NAME  
 STANDARD

JOB NUMBER  
 9070-90-000

SHEET NUMBER | SCALE  
 01 OF 01 | 1:1

DRAWING NUMBER  
 9070-90-000-D

# X S V O L G H

## PNEUMATIC DIAGRAM - ORION WITH BLOCKING VALVE

