



SLD

Special Lapping Disc
For Professional
Lapping of Ink Cups

- ▲ Extends Lifetime of Ink Cups
- Improves Print Quality
- Increases Productivity

SLD

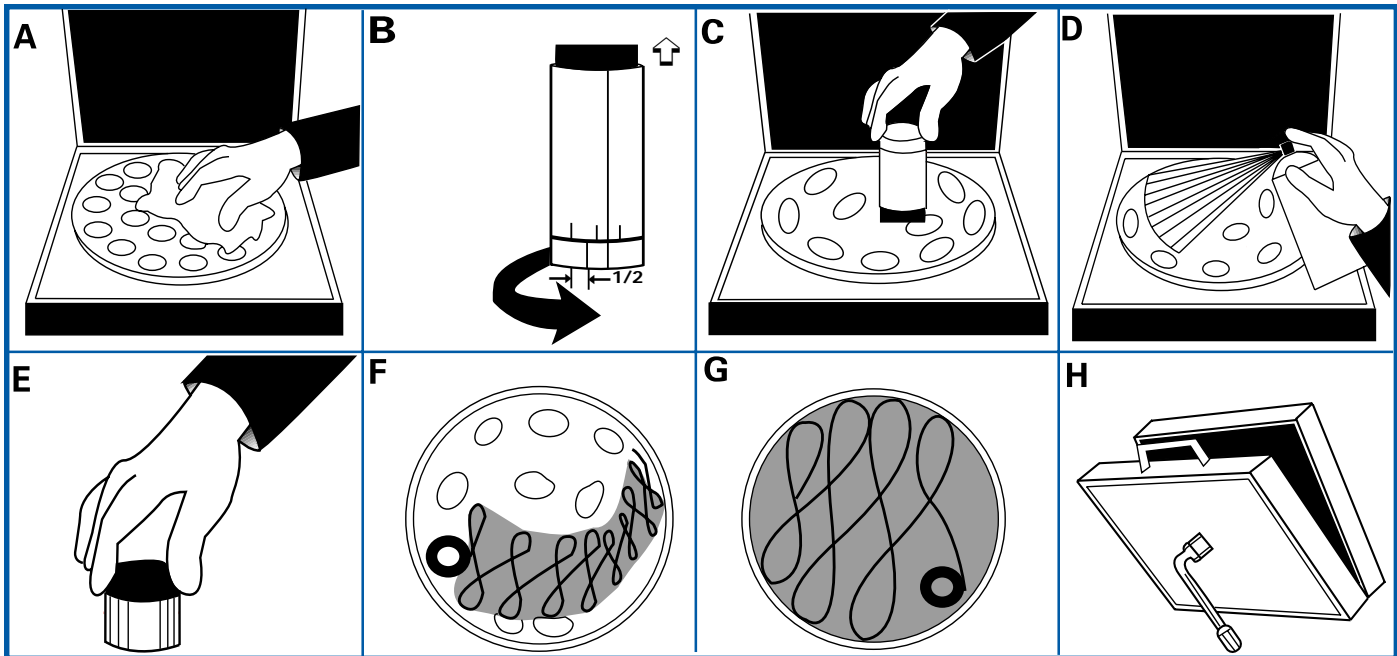
Special Lapping Disc For Professional Lapping of Ink Cups

- ▲ Lapping & polishing of ink cup rings extends productivity.
- Unit is easy to use and increases the lifetime of ink cups.
- Professional quality lapping is economical using convenient unit and step-by-step technique.

How to use the SLD Special Lapping Disc:

(TTA # 1411331)

- Open storage case and clean SLD disc with paper towel.
- Squeeze desired amount of diamond paste (1/2 scale line) by turning knurled ring in diamond paste container.
- Coat SLD disc with paste using diamond paste container.
- Slightly moisten diamond film with SLD spray fluid.
- Put clean ink cup on SLD disc. On ink cups with integrated magnets, take magnet out first.
- With slight hand pressure, move ink cup over disc using pattern as shown below, first in small movements, to distribute diamond paste.
- Continue as in step F, but with larger movements back and forth from one side of disc to the other. After 20 to 30 seconds of this process, ink cup will be relapped, polished and ready for use.
- Clean ink cup and SLD disc after completion of lapping and polishing procedure and close case for storage. Should the SLD disc become dislodged, it can be refastened by tightening screw located on bottom of case.



© 2002 Trans Tech America Inc.

SL02.06.27

Trusted Partner for Your Product Decorating Needs

Trans Tech 475 North Gary Avenue, Carol Stream, IL 60188
Tel +1 (630) 752 4000 Fax +1 (630) 752 4467
Email sales@itwtranstech.com

www.itwtranstech.com www.itwid.com

A MEMBER OF

 **IDS** | A Division of ITW