

Reciprocating Cup Slide

Auxiliary Device for Pad Printing

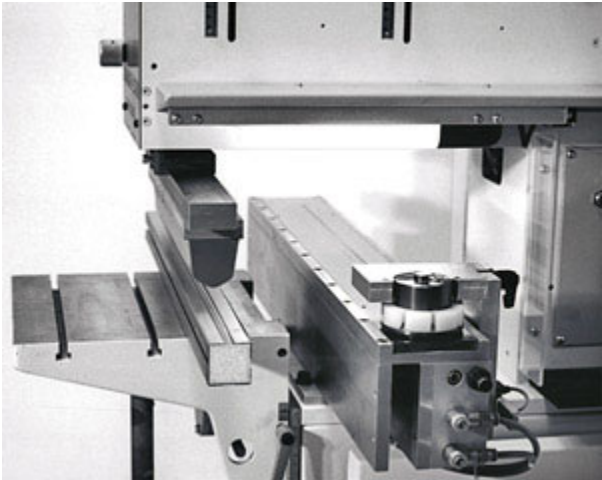
- **Extends Capabilities of Sealed Ink Cup Systems**
- **Allows Printing Images of Up To 18 Inches Long**
- **Easy Changeover & Quick Installation**

The **Reciprocating Cup Slide** enables pad printing of images up to eighteen inches in length with sealed ink cup technology by using either existing sealed ink cup or conventional pad printing machines. This versatile conversion kit with a reciprocating ink cup will not only fit ITW Trans Tech [pad printing machines](#), but also many other manufacturers' machines as well.



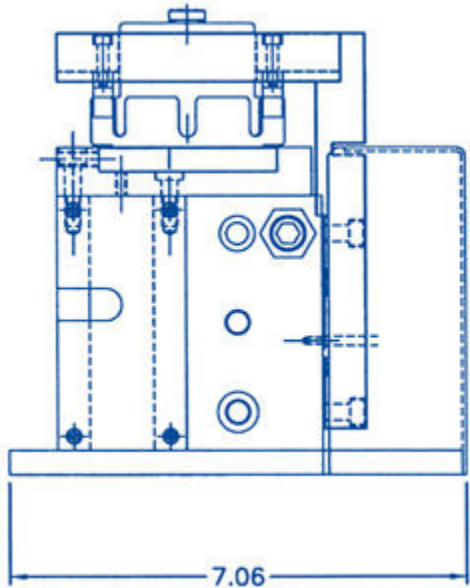
Allows Pad Printing of Especially Long or Narrow Images

Product decorators who require long or narrow images will benefit from this accessory. Tubing, catheters, binder spines, even multiple images separated by some distance can be successfully pad printed using the cup slide unit.



Typical reciprocating cupslide installation on a padprinting machine.

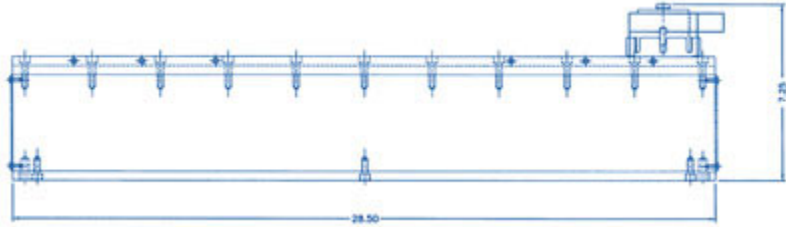
The
 passes
 rewetting
 ink
 previously
 60mm ink
 cup seal
 even over
 makes the
 polymer,



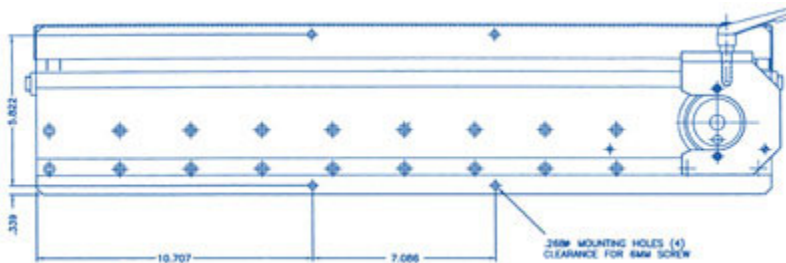
Drawing

reciprocating 60mm cup continuously across the cliché image, constantly the image and allowing the operator to use thinners mixed to the same ratios as used. Retarding the ink is completely unnecessary. The unique design of the cup allows little or no ink leakage from the and provides exceptionally clean doctoring, slightly irregular surfaces. This feature system ideal for use with steel, foil, hydro-foil and Express- 3 cliché materials.

of side view of cupslide (above).



Drawing of front view of cupslide (above) and top view (below).



Conversion of existing sealed ink cup or open inkwell-type pad printers is fast and can easily be changed back to a standard configuration. The doctor slide and cliché holder table are simply removed, a sensor is then installed, wires and air connected, and the machine is ready to print.

This conversion accessory can also be ordered on new pad printing machines at considerable savings.

**TECHNICAL DATA:
Reciprocating Cup Slide**

- Expands capabilities of sealed ink cup pad printing system
- Allows printing of images of up to eighteen inches long
- Easy changeover & quick installation
- Auxiliary reciprocating cup slide with variable speed, pneumatic drive, adjustable cushioned slide stops, cliché holder, ground magnet plate with pin locators.

Maximum print length:

460mm (18") maximum printing area depends on available pad pressure.

Standard clichés and sizes: *[not included]*

cliché size: max. print length

80x400mm: 150mm (6")

80x550mm: 300mm (12")

80x700mm: 450mm (18")

Special sizes available upon request.

Cliché materials available:

- steel cliché
- steel foil cliché
- polymer cliché
- hydrofoil cliché

Ink cup requirements:

(1) magnetic ink cup 60mm
(not included)

Cycles per hour:

approx. 800

Electrical supply:

110 volts AC

Air supply from printer:

80 psi

Air consumption per minute:

0.08 cfm

Minimum printer opening:

(from bottom of pad holder to top of machine base) 200mm.